


Department of Engineering  
Dan Gaillet, P.E., County Engineer

3137 South Liberty Street, Canton, MS 39046  
Office (601) 790-2525 FAX (601) 859-3430

## MEMORANDUM

January 31, 2018

To: Sheila Jones, Supervisor, District I  
Trey Baxter, Supervisor, District II  
Gerald Steen, Supervisor, District III  
David Bishop, Supervisor, District IV  
Paul Griffin, Supervisor, District V

From: Dan Gaillet, P.E.   
County Engineer

Re: Sink Hole  
105 Alden Place  
Wellington Subdivision

A sink hole has formed due to the failure of an 18" pipe that carries roadway storm water from Alden Place to Millhouse Drive.

The Engineering Department suspects that the pipes have separated which is causing a dangerous sink hole. However, a full determination of damage will take place after authorization is granted to work on private property.

It is the recommendation of the Engineering Department that repairs be made to ensure that storm water is moved from point-to-point to prevent damage to the roadway and further damage to the storm water system.

Therefore, it is in the best interest of the County and the public's health, safety and welfare to make the repairs, based on:

- Separated storm water pipes; and
- Water is unable to flow freely off of Alden Place; and
- A large sink hole has formed over the pipe failure.

---

SHEILA JONES  
District One

TREY BAXTER  
District Two

GERALD STEEN  
District Three

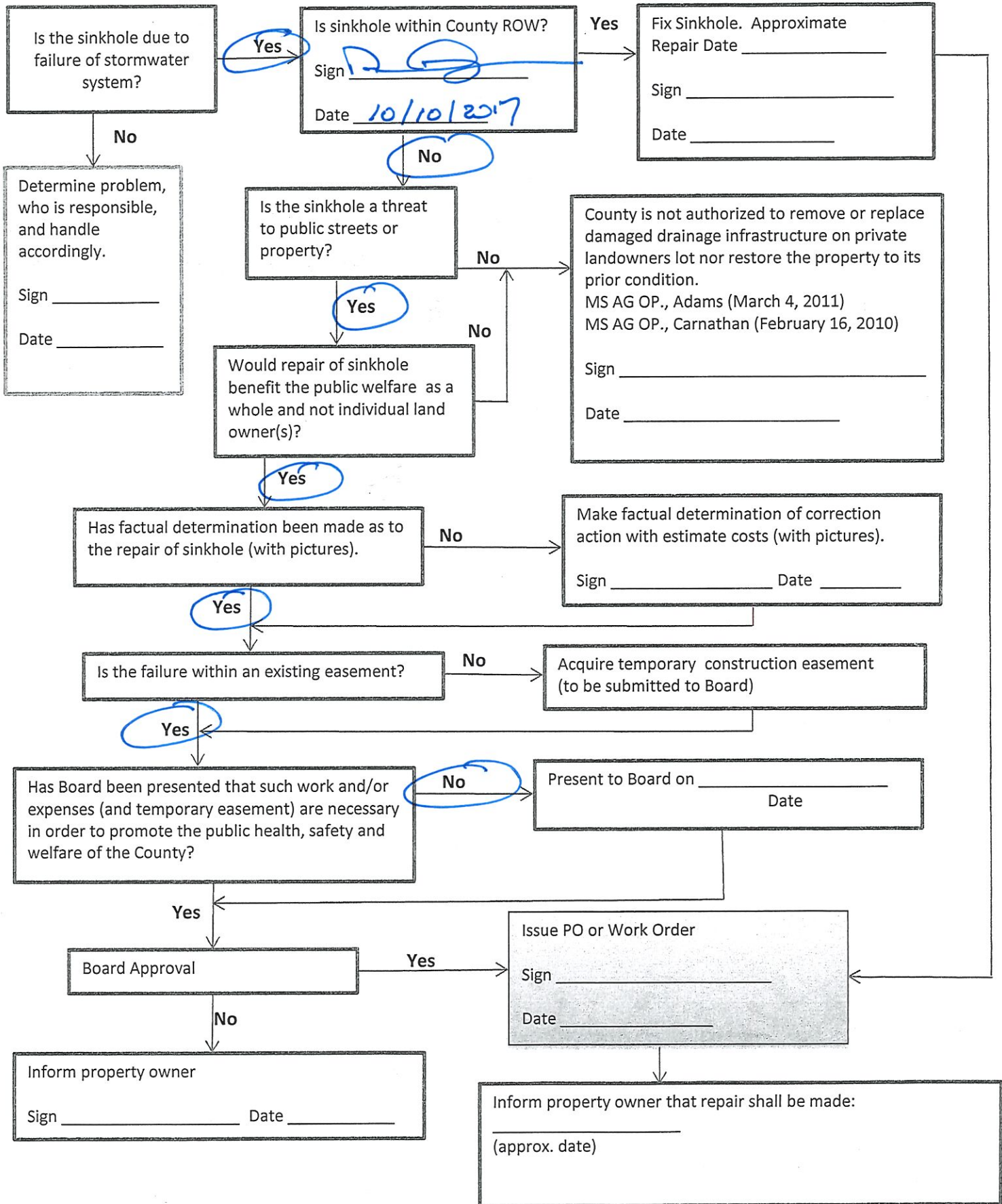
DAVID BISHOP  
District Four

PAUL GRIFFIN  
District Five

# SINKHOLE FLOW CHART

LOCATION: 105 Alden Place

DATE: 10/10/2017

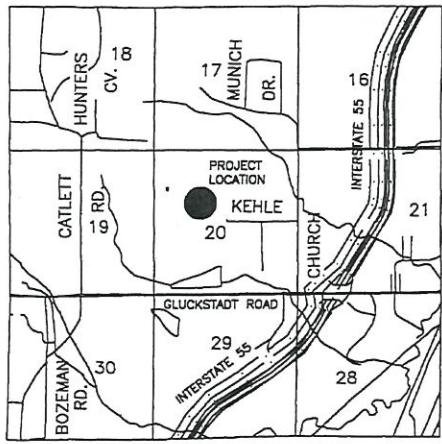




09/23 E-126B

# WELLINGTON PART ONE-C

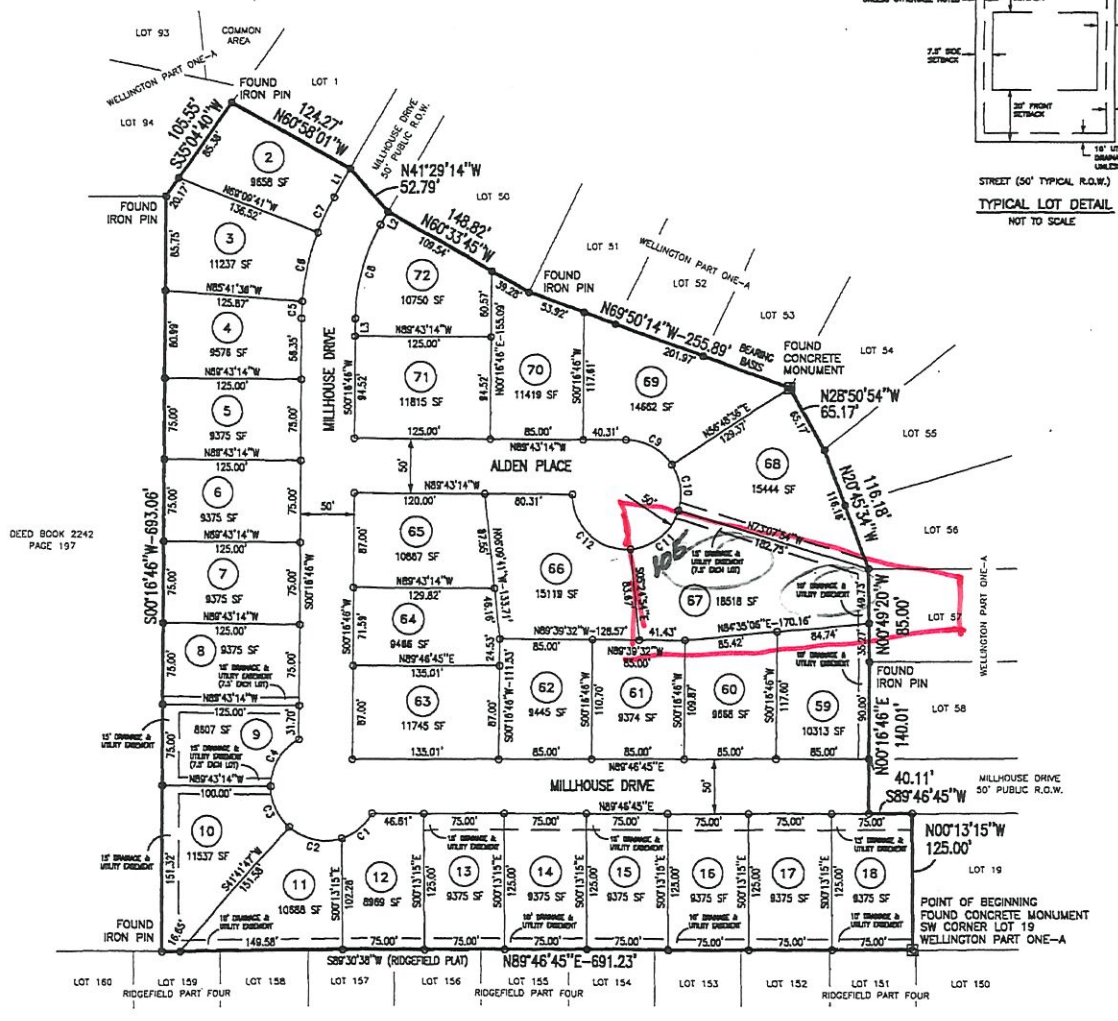
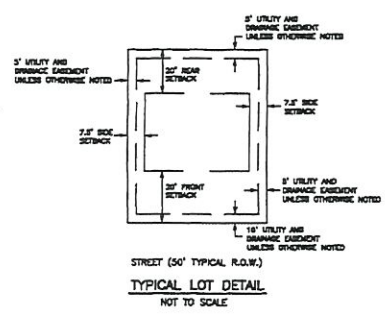
SITUATED IN THE NORTHWEST 1/4 OF SECTION 20  
TOWNSHIP 8 NORTH, RANGE 2 EAST  
MADISON COUNTY, MISSISSIPPI



VICINITY MAP SCALE: 1" = 4000'

| NUMBER | DELTA ANGLE | CHORD BEARING | RADIUS | LENGTH | CHORD |
|--------|-------------|---------------|--------|--------|-------|
| C1     | 42°38'47"   | N57°08'08"E   | 50.00  | 37.22  | 38.36 |
| C2     | 58°18'15"   | S77°56'20"E   | 50.00  | 51.72  | 48.45 |
| C3     | 48°34'58"   | N2°00'43"W    | 50.00  | 42.40  | 41.14 |
| C4     | 80°00'00"   | N30°16'44"E   | 50.00  | 52.36  | 50.00 |
| C5     | 04°01'36"   | N02°17'33"E   | 225.00 | 15.82  | 15.81 |
| C6     | 18°31'55"   | S12°34'22"W   | 225.00 | 64.82  | 64.70 |
| C7     | 08°58'09"   | N28°19'24"E   | 225.00 | 35.22  | 35.19 |
| C8     | 28°31'43"   | S19°02'37"W   | 175.00 | 86.18  | 86.20 |
| C9     | 56°31'50"   | N81°27'18"W   | 50.00  | 46.33  | 47.36 |
| C10    | 30°03'50"   | S28°00'38"E   | 50.00  | 43.88  | 42.31 |
| C11    | 67°42'58"   | S59°43'56"W   | 50.00  | 58.28  | 55.71 |
| C12    | 85°41'40"   | N47°34'04"W   | 50.00  | 83.51  | 74.14 |

| NUMBER | DIRECTION   | DISTANCE |
|--------|-------------|----------|
| L1     | N28°48'29"E | 30.34'   |
| L2     | S28°48'29"W | 13.41'   |
| L3     | S00°16'46"W | 16.02'   |



DEED BOOK 2242  
PAGE 197